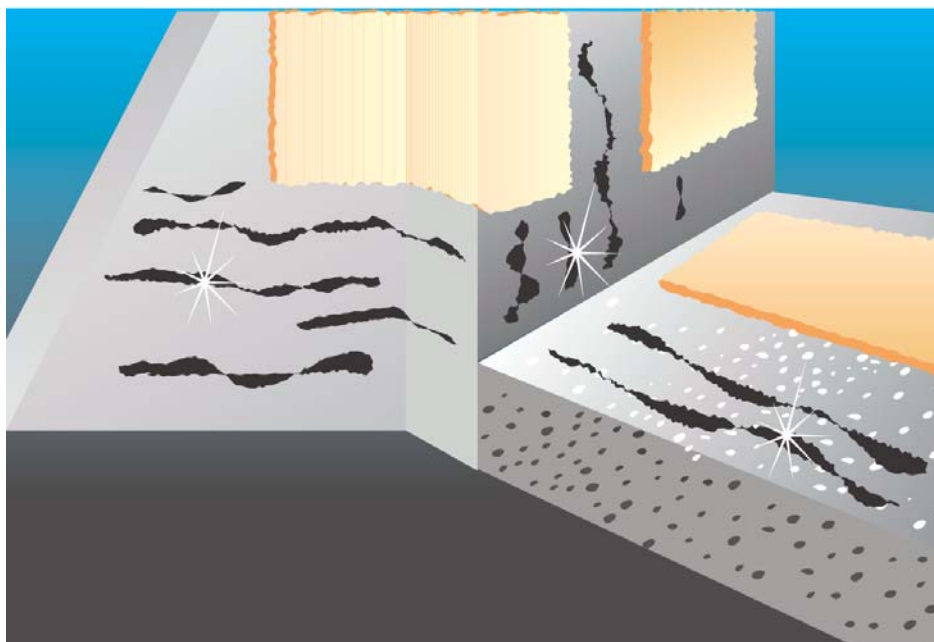




SINTOMASTIK



Solvent based bituminous glue for insulating panels

Characteristics and Use

Sintomastik is an elastomer distilled bitumen solvent based bituminous glue designed to glue insulating panels in mineral wool, glass wool etc. and double-sanded bituminous membranes (without polyethylene detaching film) horizontally and vertically on cement, wood or other types of transpiring laying surfaces. When applied on vertical laying surfaces, prop up while the product dries.

Application

Sintomastik may be applied either in spots or in strips. In the case of spot application, the glue spots (approx. 40/50 ml each) should be spaced by about 30/35 cm while in the case of strip application, the strips should be spaced by about 40 cm with a width of 5 cm and a thickness of 3 / 4 mm.

Important instructions

Minimum and maximum environment and laying surface coating temperatures: MIN 5°C, MAX 40°C.

Regulations

(according to EEC regulations)
Symbol HAZARDOUS
Risk level R20 Do not inhale



14

Casali reserves the right to modify the data shown on this technical sheet without prior notice.

| CHARACTERISTICS OF THE LIQUID PRODUCT | | | |
|---------------------------------------|----------------------------|-----------------|-------------------------|
| Specific weight | 1.08 | ± | 0.05 Kg/dm ³ |
| Dry residue | 75 | ± | 1% |
| Appearance | Black thixotropic compound | | |
| CHARACTERISTICS OF THE DRY PRODUCT | | | |
| Adhesion (on asbestos cement) | 0.90 | ± | 0.10 N/mm ² |
| TOOLING | THINNER | TYPE OF THINNER | CLEANING METHOD |
| Squeegee | Ready to Use | - | R1 Thinner |
| Toothed squeegee | Ready to use | - | |
| COVERAGE | LAYING SURFACE | | |
| Approx. 350 g. per sq.m. | Clean and dry | | |
| STORAGE | | | |
| Storage temperature | MIN. -5°C MAX 40°C | | |
| Pot life | 24 months | | |
| Container sizes | 10 - 20 kg | | |
| Colours available | Black | | |

rev. 01/04

SINTOMASTIK